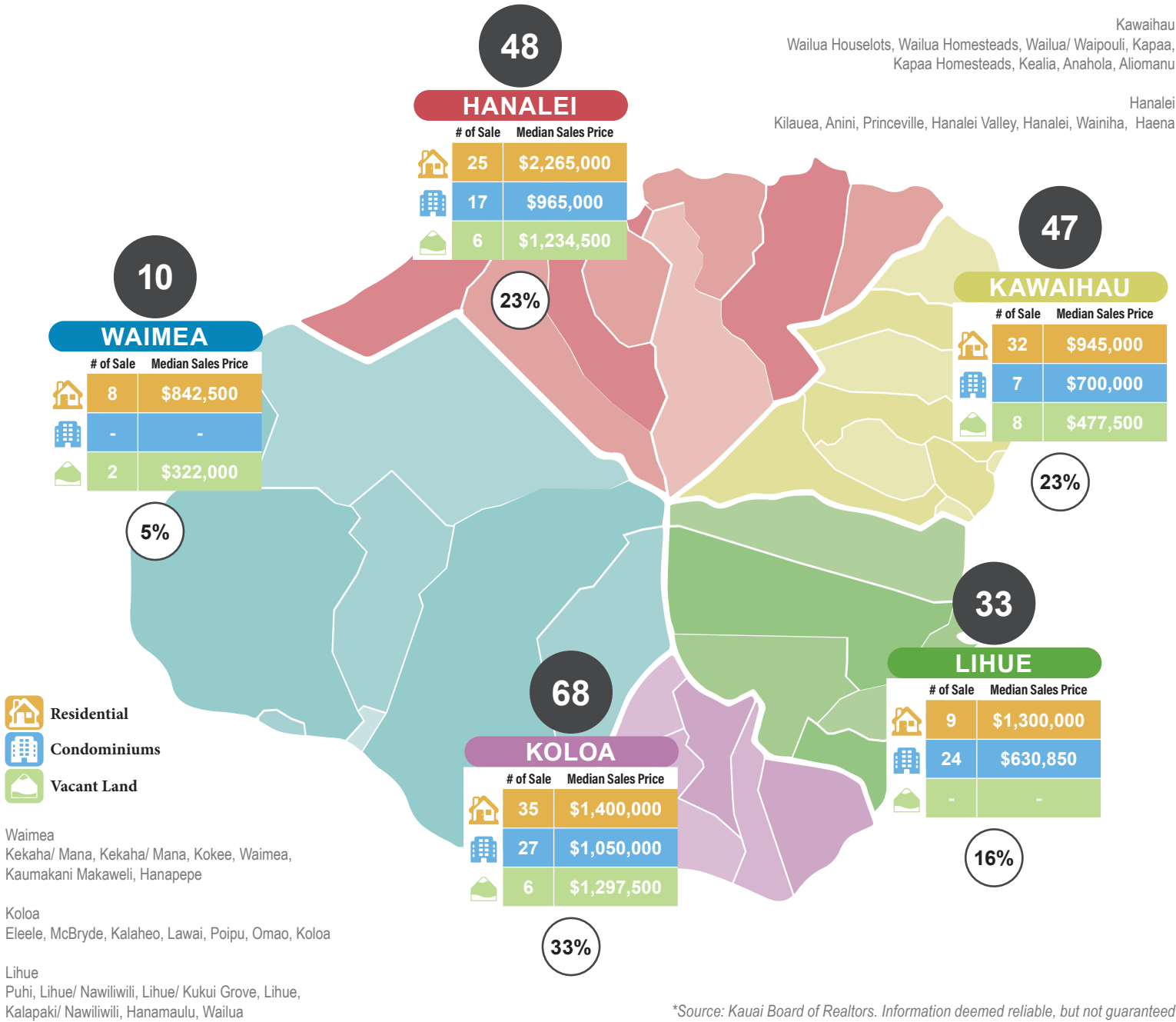


Kawaihau
Wailua Houselots, Wailua Homesteads, Wailua/ Waipouli, Kapaa, Kapaa Homesteads, Kealia, Anahola, Aliomanu

Hanalei
Kilauea, Anini, Princeville, Hanalei Valley, Hanalei, Wainiha, Haena



*Source: Kauai Board of Realtors. Information deemed reliable, but not guaranteed.

	% OF CLOSINGS	# OF UNITS RECORDED			MEDIAN PRICE		
HOMES	53%	109	▼	-20%	\$1,300,000	▲	13%
CONDO	36%	75	▼	-28%	\$800,000	▼	-14%
LAND	11%	22	▼	-42%	\$662,054	▼	-41%

DISTRICT	YTD NUMBER OF UNITS RECORDED			YTD TOTAL DOLLAR VOLUME		
	2026	% Change		DISTRICT	2026	% Change
KOLOA	68	33%		KOLOA	\$119,392,219	-16%
KAWAIIHAU	47	23%		HANALEI	\$115,000,736	-10%
HANALEI	48	23%		KAWAIIHAU	\$51,170,310	-36%
LIHUE	33	16%		LIHUE	\$30,469,614	-19%
WAIMEA	10	5%		WAIMEA	\$7,295,900	-38%
TOTAL	206	-26%		TOTAL	\$323,328,779	-19%

○ % of Closed Sales by Districts through April 30, 2026
 ● Number of Recorded Transactions from January 1, 2026 - April 30, 2026



KAUAI
YEAR-TO-DATE

206
TOTAL NUMBER OF SALES
2026

278
TOTAL NUMBER OF SALES
2026

-23%

\$1,300,000
MEDIAN PRICE HOME
13%

\$800,000
MEDIAN PRICE CONDO
-14%

\$662,054
MEDIAN PRICE LAND
-41%

\$323,328,779
TOTAL DOLLAR VOLUME
2026

\$398,211,712
TOTAL DOLLAR VOLUME
2026

-19%

RESIDENTIAL

	Number of Sales			Median Sales Price			Total Dollar Volume		
	2026	2025	% Change	2026	2025	% Change	2026	2025	% Change
WAIMEA	8	13	-38%	\$842,500	\$745,000	13%	\$6,651,900	\$10,228,000	-35%
KOLOA	35	52	-33%	\$1,400,000	\$1,278,750	9%	\$78,289,219	\$91,378,988	-14%
LIHUE	9	8	13%	\$1,300,000	\$1,140,000	14%	\$10,753,000	\$10,202,500	5%
KAWAIHAU	32	42	-24%	\$945,000	\$1,075,000	-12%	\$42,185,310	\$54,860,311	-23%
HANAIEI	25	21	19%	\$2,265,000	\$2,375,000	-5%	\$81,745,628	\$54,234,414	51%
TOTAL	109	136	-20%	\$1,300,000	\$1,150,000	13%	\$219,625,057	\$220,904,213	-1%

CONDOMINIUM

	Number of Sales			Median Sales Price			Total Dollar Volume		
	2026	2025	% Change	2026	2025	% Change	2026	2025	% Change
WAIMEA	-	1	-100%	-	\$735,000	-100%	-	\$735,000	-100%
KOLOA	27	33	-18%	\$1,050,000	\$1,100,000	-5%	\$31,598,000	\$38,320,000	-18%
LIHUE	24	27	-11%	\$630,850	\$472,000	34%	\$19,716,614	\$23,547,500	-16%
KAWAIHAU	7	14	-50%	\$700,000	\$600,000	17%	\$4,989,000	\$10,670,000	-53%
HANAIEI	17	29	-41%	\$965,000	\$1,188,000	-19%	\$16,861,000	\$36,156,999	-53%
TOTAL	75	104	-28%	\$800,000	\$925,000	-14%	\$73,164,614	\$109,429,499	-33%

VACANT LAND

	Number of Sales			Median Sales Price			Total Dollar Volume		
	2026	2025	% Change	2026	2025	% Change	2026	2025	% Change
WAIMEA	2	2		\$322,000	\$362,500	-11%	\$644,000	\$725,000	-11%
KOLOA	6	11	-45%	\$1,297,500	\$1,075,000	21%	\$9,505,000	\$12,345,000	-23%
LIHUE	-	4	-100%	-	\$900,000	-100%	-	\$3,800,000	-100%
KAWAIHAU	8	11	-27%	\$477,500	\$1,150,000	-58%	\$3,996,000	\$14,194,000	-72%
HANAIEI	6	10	-40%	\$1,234,500	\$1,737,500	-29%	\$16,394,108	\$36,814,000	-55%
TOTAL	22	38	-42%	\$662,054	\$1,125,000	-41%	\$30,539,108	\$67,878,000	-55%

*Source: Kauai Board of Realtors. Information deemed reliable, but not guaranteed.



HANALEI

HOMES

Number of Sales	25	19%
Total Dollar Transactions	81,745,628	51%

CONDOS

Number of Sales	17	-41%
Total Dollar Transactions	16,861,000	-53%

LAND

Number of Sales	6	-40%
Total Dollar Transactions	16,394,108	-55%

KAWAIIHAU

HOMES

Number of Sales	32	-24%
Total Dollar Transactions	42,185,310	-23%

CONDOS

Number of Sales	7	-50%
Total Dollar Transactions	4,989,000	-53%

LAND

Number of Sales	8	-27%
Total Dollar Transactions	3,996,000	-72%

WAIMEA

HOMES

Number of Sales	8	-38%
Total Dollar Transactions	6,651,900	-35%

CONDOS

Number of Sales	-	-100%
Total Dollar Transactions	-	-100%

LAND

Number of Sales	2	0%
Total Dollar Transactions	644,000	-11%

LIHUE

HOMES

Number of Sales	9	13%
Total Dollar Transactions	10,753,000	5%

CONDOS

Number of Sales	24	-11%
Total Dollar Transactions	19,716,614	-16%

LAND

Number of Sales	-	-100%
Total Dollar Transactions	-	-100%

KOLOA

HOMES

Number of Sales	35	-33%
Total Dollar Transactions	78,289,219	-14%

CONDOS

Number of Sales	27	-18%
Total Dollar Transactions	31,598,000	-18%

LAND

Number of Sales	6	-45%
Total Dollar Transactions	9,505,000	-23%

Waimea
 Kekaha/ Mana, Kekaha/ Mana, Kokee, Waimea,
 Kaumakani Makaweli, Hanapepe

Koloa
 Eleele, McBryde, Kalaheo, Lawai, Poipu, Omao, Koloa

Lihue
 Puhi, Lihue/ Nawiliwili, Lihue/ Kukui Grove, Lihue,
 Kalapaki/ Nawiliwili, Hanamaulu, Wailua

Kawaihau
 Wailua Houselots, Wailua Homesteads, Wailua/ Waipouli,
 Kapaa, Kapaa Homesteads, Kealia, Anahola, Aliomanu

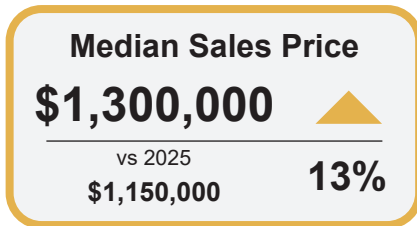
Hanalei
 Kilauea, Anini, Princeville, Hanalei Valley, Hanalei,
 Wainiha, Haena

*Source: Kauai Board of Realtors. Information deemed reliable, but not guaranteed.

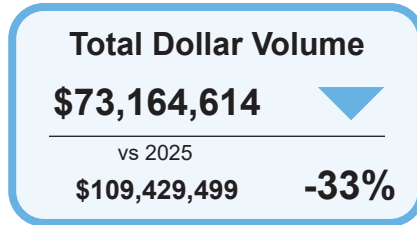
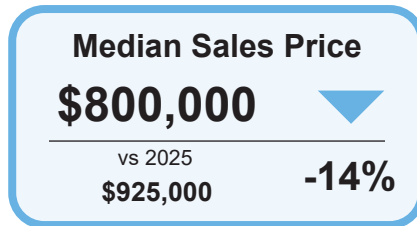
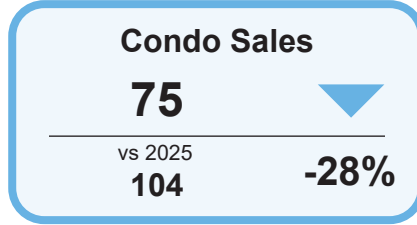




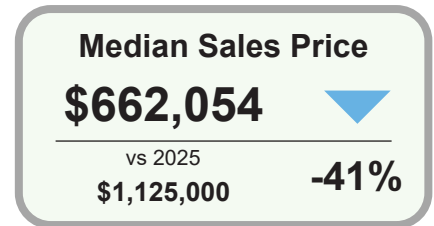
RESIDENTIAL



CONDOMINIUM



VACANT LAND



Scan Hawaii Buyer & Seller Guide



*Source: Kauai Board of Realtors. Information deemed reliable, but not guaranteed.

